

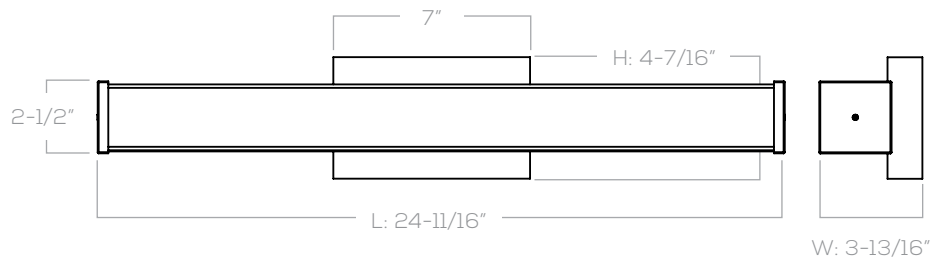
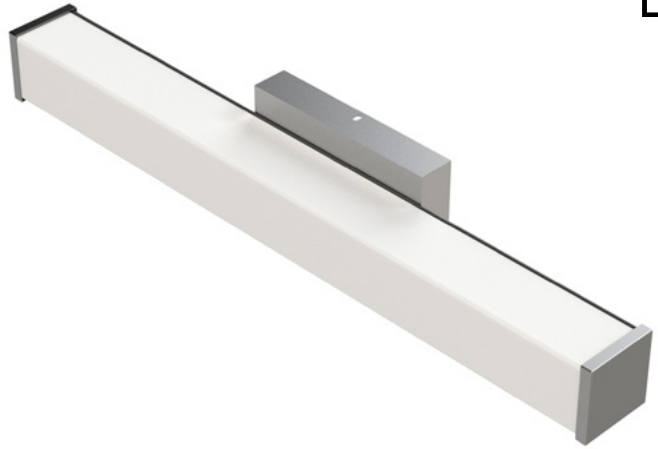
VANITY SERIES

COMMERCIAL BATHROOM FIXTURES



Part #	UT-VL-24-30K
Project	
Type	

Our Vanity Series fixture provides a quality, long-lasting LED lighting solution that fits into almost any bathroom design. It is powered directly by 120V AC line voltage, removing the need for external LED power supplies. This fixture is TRIAC dimmable and rated for use in bathrooms and other locations where moisture can be a factor. The lens provides 180° light distribution to evenly illuminate the entire area. This product is ideal for both residential and commercial applications. U Technology welcomes custom design requests, please contact our team for more details.



PRODUCT SPECIFICATIONS:

Input Voltage	120V AC
Power Consumption	25W
Light Output	1,750 Lumens
Beam Angle	180°
Dimming	TRIAC dimmable
CCT	3000K
CRI	82+
Expected Lifetime	+50,000 hours

Dimensions	L: 24-11/16" x W: 3-13/16" x H: 4-7/16"
Finish	Brushed nickel
Construction	Stainless steel body, white acrylic lens
Rating	Damp rated (IP44)
Certification	cETL to CSA Standards
Warranty	5 years*
Mounting	Surface mount to wall (horizontal or vertical)

* Must meet U Technology's Terms and Conditions

ORDERING INFORMATION:

Part #:	Size:	CCT:
UT-VL-	24"	30K



ARCHITECTURAL



DIMMABLE



DAMP RATED



3000K

