



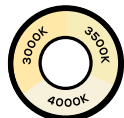
Engineered Lighting Solutions

# LLS SERIES

VERSATILE COMMERCIAL LED LINEAR FIXTURE



Up to 1,296 combinations for maximum flexibility:



CCT SWITCH



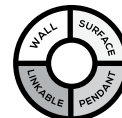
VOLTAGE



POWER SWITCH



3 FIXTURE SIZES



4 MOUNTING OPTIONS

# LLS SERIES

VERSATILE COMMERCIAL LED LINEAR FIXTURES



LLS linear fixtures are an ideal solution for stairwells, parking garages and large retail applications, featuring CCT and Wattage DIP switches. The housing is constructed of cold-rolled steel, making them durable and light-weight. With high transmission PC lenses, the efficacy can reach up to 130 LM/W. Protect the fixture with an optional wire guard featuring a quick open button for easy access, and can be removed for maintenance purposes.

## PRODUCT SPECIFICATIONS:

<b>Input Voltage</b>	120V-347V AC
<b>Max Delivered Lumens</b>	2,600 Lm max (2ft) 5,200 Lm max (4 ft) 9,100 Lm max (8 ft)
<b>Beam Angle</b>	120°
<b>Dimming</b>	0-10V, dim to off
<b>Selectable CCT</b>	3000K   3500K   4000K
<b>Construction</b>	White trim, cold-rolled steel housing, polycarbonate frosted lens
<b>Installation</b>	Surface mount - horizontal or vertical, Suspension mount pendant, & Linkable
<b>CRI</b>	>80
<b>Mounting Height</b>	up to 20ft

<b>Rating</b>	Damp location
<b>Dimensions (L x W x H)</b>	See Page 3
<b>Certification</b>	cUL to CSA Standards
<b>Warranty</b>	5 years*
<b>Expected Life (L70)</b>	120,000+ hrs
<b>Temperature Rating</b>	-30°C to 45°C
<b>IK Rating - without cage</b>	7
<b>Accessories</b>	MS: Motion/daylight sensor** SK: Suspension kit*** WG: Wire guard LB: 4ft linkable bracket**** EB: Emergency battery backup (4FT and 8FT only) RMT: Remote control

\* Must meet U Technology Terms and Conditions

\*\* Please check sensor details online

\*\*\* Standard suspension kit: 3ft

\*\*\*\* 4FT and 8FT only

## MAXIMUM CONTINUOUS LENGTH:

	# of Pieces		
	120V	277V	347V
<b>4' LLS</b>	15 (60ft)	30 (120ft)	40 (160ft)
<b>8' LLS</b>	10 (80ft)	20 (160ft)	25 (200ft)

## POWER AND DELIVERED LUMENS:

	Selectable Power Consumption (W)							
	10W	15W	20W	30W	40W	50W	60W	70W
<b>2' LLS</b>	1,300	1,950	2,600	-	-	-	-	-
<b>4' LLS</b>	-	-	2,600	3,900	5,200	-	-	-
<b>8' LLS</b>	-	-	-	-	-	6,500	7,800	9,100

# LLS SERIES

VERSATILE COMMERCIAL LED LINEAR FIXTURES



## ORDERING INFORMATION / PART #:

<b>Project:</b>			
<b>Part #:</b>	UT-LLS-		
<b>Type:</b>		<b>Quantity:</b>	

<b>Length:</b>	2 ft	4 ft	8 ft
<b>Accessories:</b>	<b>MS:</b> Motion/Daylight Sensor	<b>SK:</b> Suspension Kit	<b>WG:</b> Wire Guard
	<b>LB:</b> Linkable Bracket*	<b>EB:</b> Emergency Backup Battery**	<b>RMT:</b> Remote

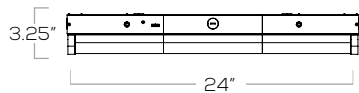
\* Linkable bracket is only available for lighting fixtures that use 4ft or 8ft increments

\*\* Emergency battery backup for 4FT and 8FT only

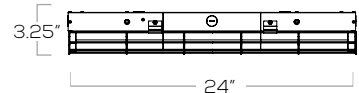
Factory preset available with sufficient lead time and large quantities ordered

### 2FT LLS SLIM

Without Wire Guard

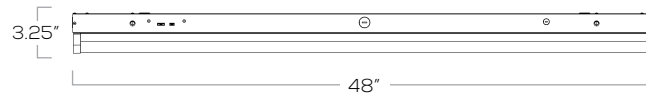


With 2ft Wire Guard

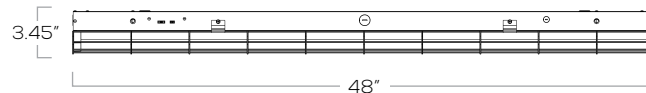


### 4FT LLS SLIM

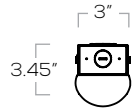
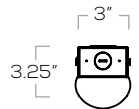
Without Wire Guard



With 4ft Wire Guard

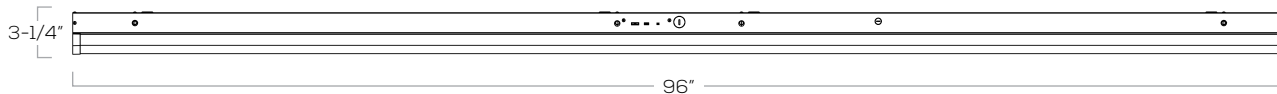


### END VIEW



### 8FT LLS SLIM

Without Wire Guard



With 2 x 4ft Wire Guards



### END VIEW

