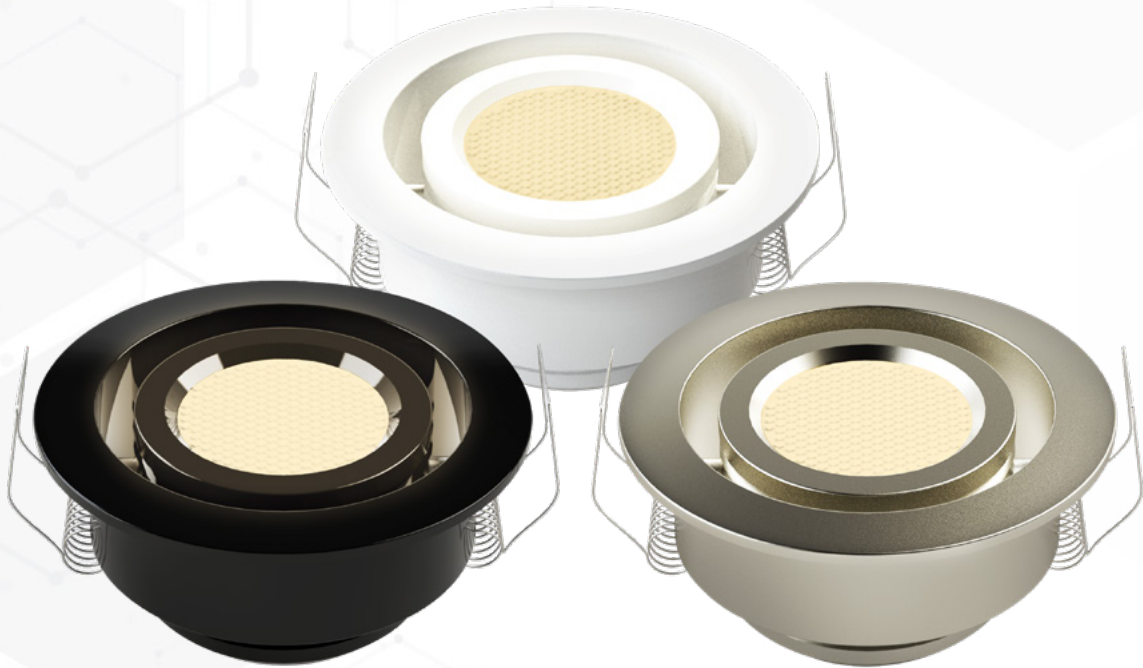


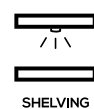
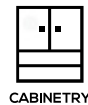
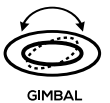
MIKRA SERIES

ADVANCED GIMBAL CABINET LIGHTS | CLG



ADVANCED GIMBAL CABINET LIGHTS | CLG

- Robust gimbal adjustment allows for precise light placement
- Uniform light output with no visual hot-spotting
- Easily recess mount with dimming capabilities down to 1%
- Perfect for cabinetry, shelving, art lighting, displays, stairs and more



MIKRA SERIES

ADVANCED GIMBAL CABINET LIGHTS | CLG



| | | | |
|----------------|-----------|-----------------|--|
| Part # | UT-CLG-R- | | |
| Project | | | |
| Type | | Quantity | |

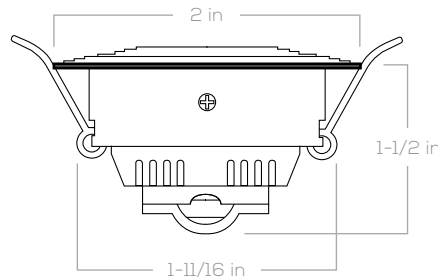
The MIKRA Series CLG gimbal-style cabinet lights are an advanced option for cabinetry, shelving, stairs and other small area lighting projects with it's versatile bi-directional 25° gimbal adjustment. These puck lights can be easily recessed into the desired location while maintaining future accessibility, are dimmable down to 1% and are available in three trim colors. Our LED Technology ensures the light output is uniform with no visual hot spotting and their compact size make them the ideal product for many indoor residential or light commercial applications.

All dimensions are approximate, please acquire product sample(s) for precise milling.



Robust Gimbal

30° beam angle / 25° gimbal adjustment



CCT:



3000K
Warm White

Trim Options:



Black White Brushed Nickel

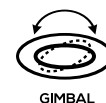
PRODUCT SPECIFICATIONS:

| | | | |
|--------------------------------|------------------------------|---------------------------------------|---|
| Input Voltage | 12V DC 24V DC | CCT | 3000K |
| Power Consumption | 3.0W | Min. Depth (inches) | 1-1/2 |
| Initial Lumens | 125 | Gimbal Features | Bi-directional, 25° gimbal adjustment |
| Beam Angle | 30° | Rating | Dry location |
| LED Dimming Range | 1% (driver/dimmer dependent) | Certification | cSGS to CSA and cUL Standards |
| CRI | 90+ | Warranty | 3 years* |
| Construction | Aluminum housing | Mounting | Recess, spring loaded clamps, hardwire quick connector included |
| Cutout (inches) | 1-11/16 in | Power Supplies (sold separate) | Dimmable: UT-PS-ELA Series Non-Dimmable: UT-PS-ELH Series |
| Outer Diameter (inches) | 2 in | | |

* Must meet U Technology Terms and Conditions

ORDERING INFORMATION:

| Part #: | Trim Finish: | CCT: | Voltage: |
|-----------|--------------------|------|--------------|
| UT-CLG-R- | BK WH BN | 30K | 12V 24V |



CM2109



For further information or to order, please contact our team:
customersuccess@utechnology.ca • utechnology.ca • (403) 800-3044